



Natural Gas



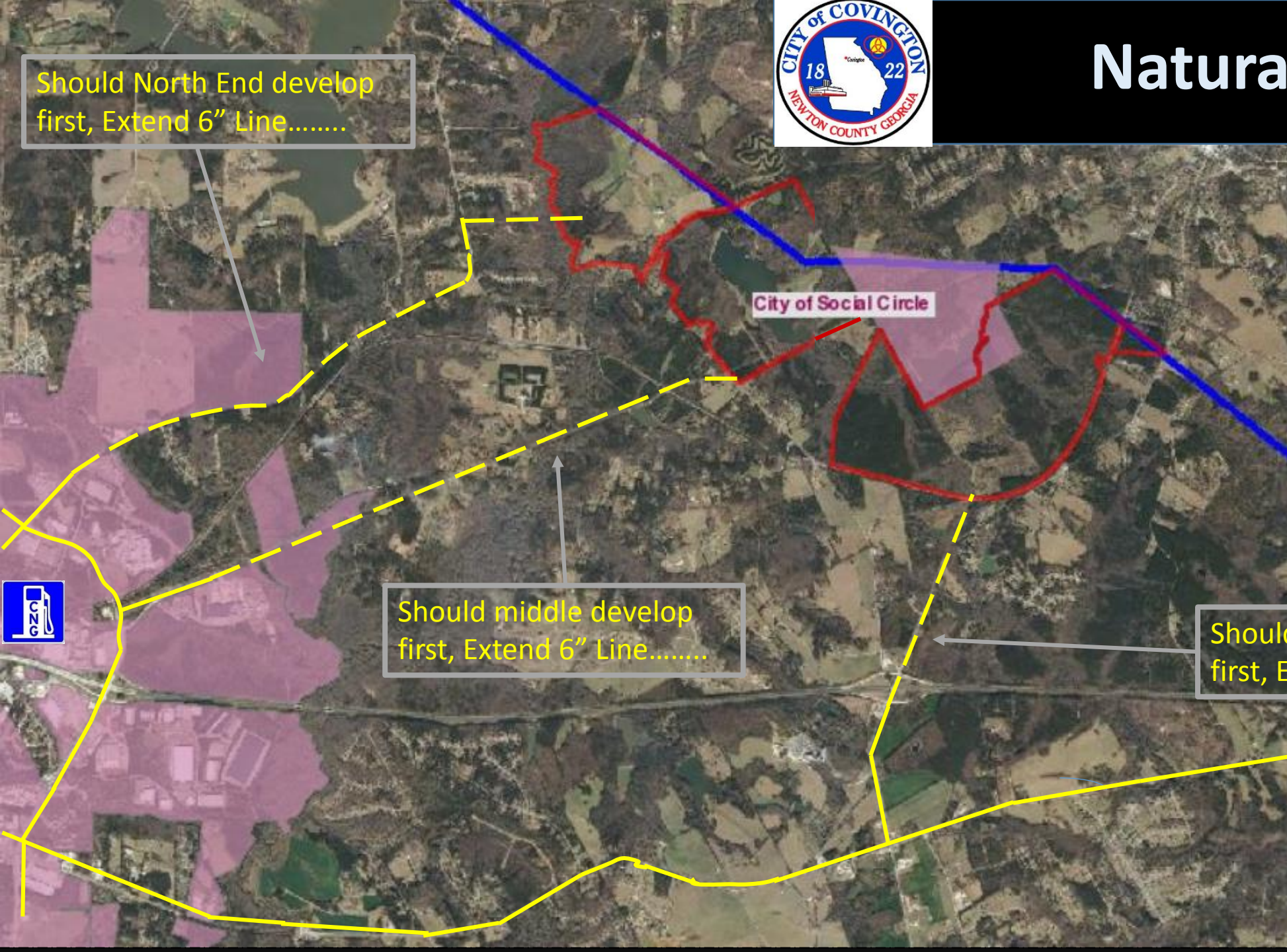
Should North End develop first, Extend 6" Line.....

Should middle develop first, Extend 6" Line.....

Should North End develop first, Extend 6" Line.....

City of Social Circle

- Existing Gas Line
- - - To Be Installed



City of Covington Electric

*Delivering
Electric Energy to Industrial,
Commercial and Residential consumers
in Newton County*

Electric Service to Site can be
served from two different sources
for Enhanced Reliability

Existing CoC Electric
Distribution Line

